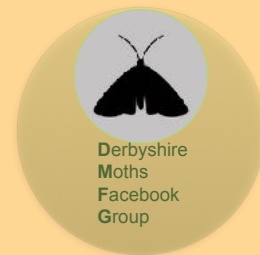


NO:7 NOVEMBER 2023

MOTH NEWS FOR DERBYSHIRE 2023

Derbyshire Moths Facebook Group (DMFG)



VC57

MOTH OF THE MONTH

November's Moth of the Month - Well a tough decision this month, especially with a rapid decline in species. I really wanted to save this one for December, but I've decided to choose **December Moth**, as this month's Moth of the Month.

A fair few have been trapped, during early November with the first ones appearing on 4th, with Emily Louise Milnes from her Sandiacre moth trap, Nikki Barrow with 2 male and a female from her Shirland moth trap, Brian Hobby with one from Kirk Hallam. Then on the 8th, Clive Ashton from his Cromford moth trap, and Graham Pollock at Quarndon with 2 from his garden moth trap.

The creamy white markings on a dark coffee coloured forewing can be quite striking, so it is unlikely to be confused with any other species which flies at the end of the year. The females are much bigger than the males.



December Moth - Nikki Barrow

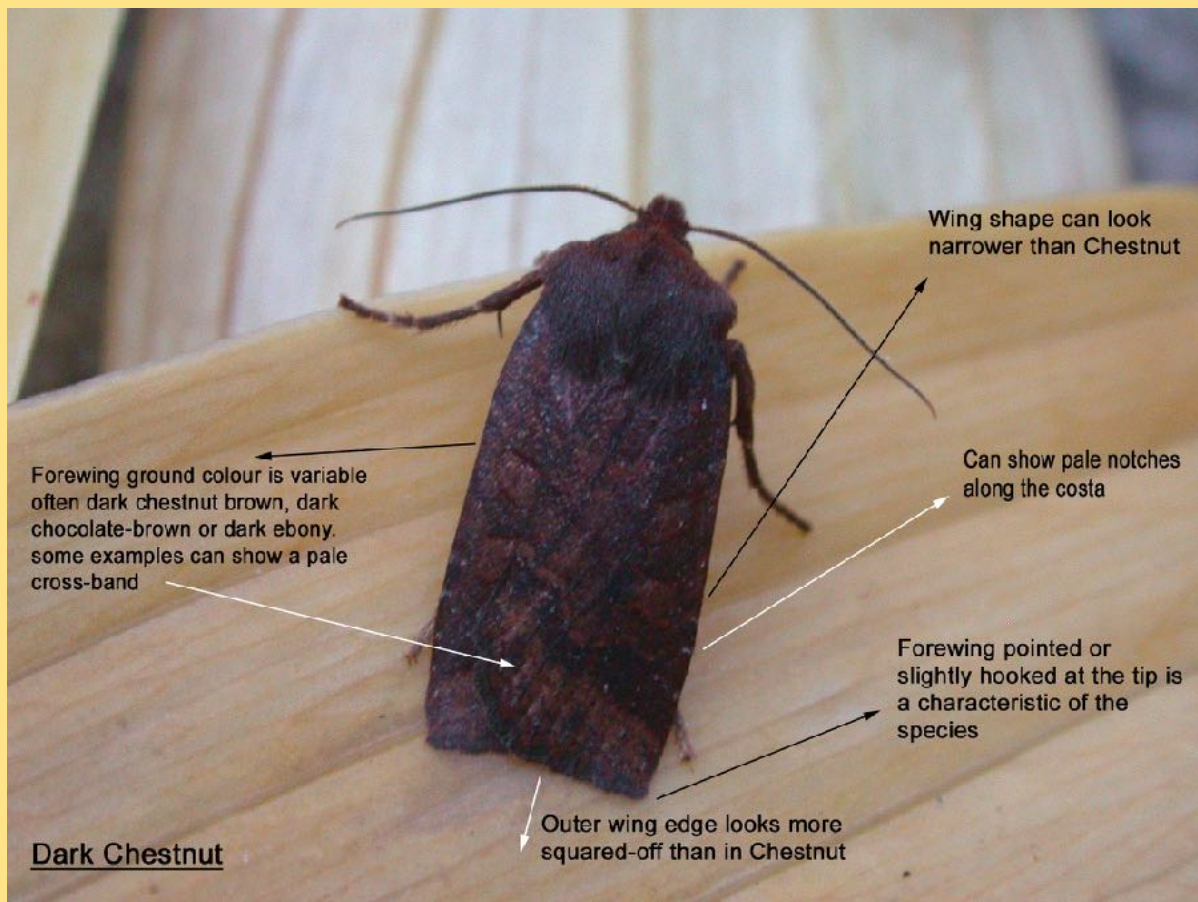


December Moth - Clive Ashton

THE MOTH ID FORUM - Chestnut v Dark Chestnut

Two autumn species that can be rather tricky to identify. The **Red Chestnut** only appears in the spring, and is therefore usually in pristine condition when trapped, making identification easier.

Because the **Chestnut** and **Dark Chestnut** appear in the autumn, and over-winter as adults, re-appearing in the spring, they are then often worn, making the identification process a little more tricky.

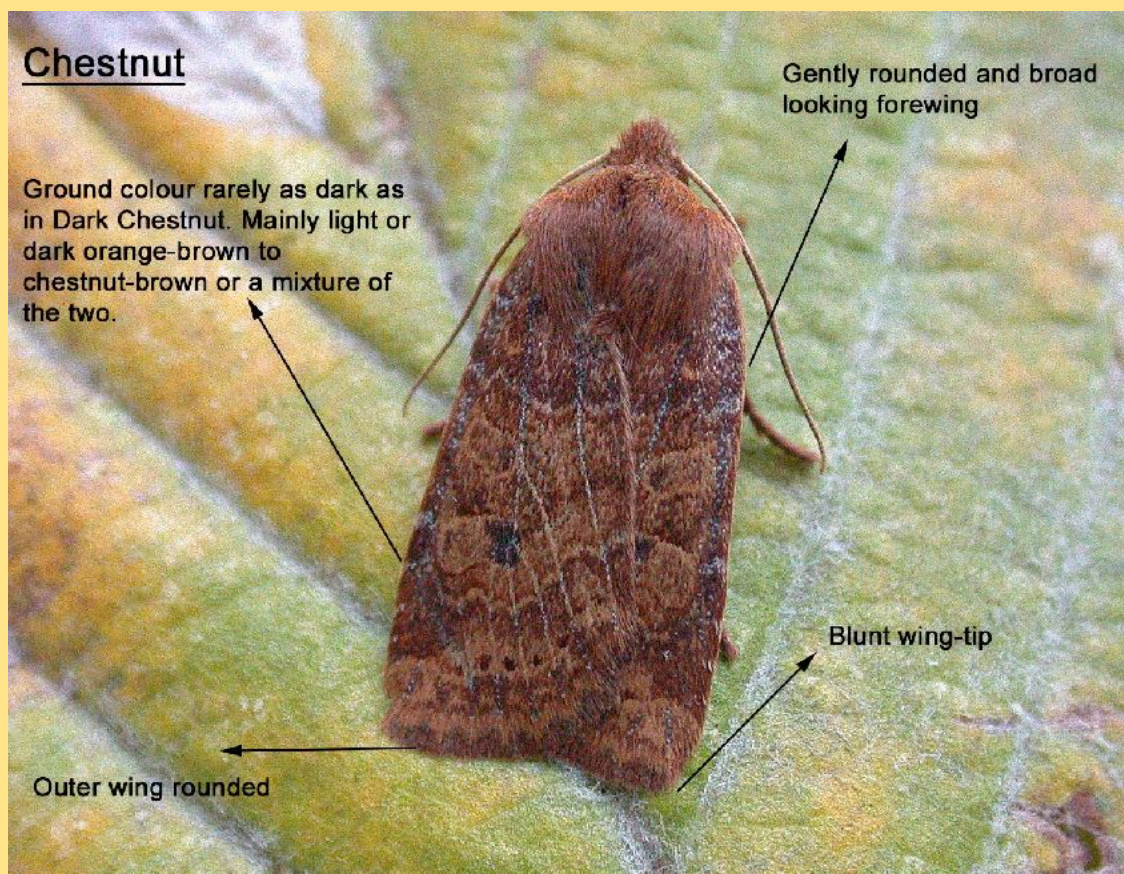


Dark Chestnut - Tony Davison

The **Dark Chestnut** - can show white marks or notches on the Costa at about two-thirds towards the wing-tip. These are faint or absent in **Chestnut**; The leading edge of forewing curves but often less so than on **Chestnut**, giving it a more narrower appearance. The tip of the Forewing is pointed or hook-shaped which is a characteristic of **Dark Chestnut**, but beware of worn individuals in late winter; Outer edge (Termen) of wing is usually straight, but in some individuals the outer edge can curve inwards ("S" shaped), making the wing tip appear somewhat hooked in appearance. The ground colour is variable ranging from a rich dark-brown (Teak colour) to a rich black-brown (Ebony colour) in extreme individuals.

THE MOTH ID FORUM - Chestnut v Dark Chestnut cont'd

The **Chestnut** - A very variable species in its ground colour, ranging from orange-brown to chestnut-brown or a mixture of the two. Rarely is it very dark in colour, (as in **Dark Chestnut**). The outer edge of the forewing is round making this easy to distinguish from other species flying in the autumn. The tip of the forewing is blunt and the leading edge of the forewing is gently curved. The overall appearance is a rather broad looking and round-winged, orange-brown moth. Can in some case show marbling, and strongly marked dark cross-lines.



Chestnut - Tony Davison

Care is required with worn examples, especially in late autumn and in early spring. The **Red-headed Chestnut** flies in late autumn and is larger, usually greyer and has two or three dark spots in the kidney mark.

The **Red Chestnut** is on the wing in early spring and as its name suggests, is usually noticeably more reddish to purplish brown.

November - Late autumn records - A trickle of records into early November, which is to be expected for the time of year. The first moth record for November was a **Feathered Thorn** on the 1st, from Peter Walley at Mickleover. Emily Louise Milnes had 9/4 from her Sandiacre garden moth trap, including the first record of **December Moth** for November.

Nikki Barrow had three more **December Moth** at Shirland on 3rd, 2 males and a female, whilst Brian Hobby, from his Kirk Hallam garden moth trap, recorded 10/7 including 3 **Feathered Thorn**, a **Mottled Umber**, a **Silver Y** and a **December Moth**.

On 7th from his Cromford garden moth trap, Clive Ashton had 2 **December Moth** and a **Scarce Umber**.



Mottled Umber - Brian Hobby



December Moth - Clive Ashton



Feathered Thorn - Brian Hobby



Scarce Umber - Clive Ashton

November - Late autumn records - John Turner at New Mills trapped an interesting species on 12th, an **Exapate congelatella**. Not many get recorded in Derbyshire, and I'm guessing it's under-recorded. Nevertheless a great record for the county.



Exapate congelatella - John Turner

The next decent record came from Clive Ashton on the 12th when he recorded a **Northern Winter Moth** from his garden moth trap at Cromford. Fairly straight forward to identify, from the similar **Winter Moth**, as the hind wings are clean and pale silky white. It is only the males that fly, as the females are flightless and only have stunted forewings.

Brian Hobby recorded 2 **Feathered Thorn**, 3 **December Moth**, a **Chestnut** and 2 **Light-brown Apple Moth** from his Kirk Hallam garden moth trap on 14th.

A **Grey-shoulder Knot** was discovered on a garden fence on 15th, but no location was given on the record that was posted on DMFG.



Northern Winter Moth - Clive Ashton



Feathered Thorn - Brian Hobby

November - Late autumn records - Stalwart moth-ers were continuing to record species, even during some inclement weather conditions towards the last two weeks of the month. Clive Ashton had 5 **Feathered Thorn**, a **Mottled Umber**, **December Moth** and a **Light-brown Apple Moth** on 18th. Another **Mottled Umber** at New Mills, recorded by John Turner on 19th.



Mottled Umber - Clive Ashton



Mottled Umber - John Turner

Mottled Umber and **December Moth** were becoming run of the mill records, until Clive Ashton recorded a **Winter Moth** at Cromford on 20th, then on 22nd, Graham Finch had a superb collection of Leaf Miner records from Poppy Wood, a National Forest Woodland near Melbourne. He found 30 species, even though most trees had shed many of their leaves. The Leaf Miners are a fascinating group of micro moths and Dave Evans is currently putting together an article, to be published in a forthcoming bulletin. Then on 22nd a real surprise, a very early record of a **Pale Brindled Beauty**, recorded by Sam Goddard from his Fenny Bentley garden moth trap, along with a ***Caloptilia stigmatella***.



Winter Moth - Clive Ashton



Pale Brindled Beauty - Sam Goddard

November - Late autumn - The freezing cold temperatures towards the end of the month, really put paid to any further moth trapping. So it was inevitable that records would simply dwindle away and come to an abrupt end, for the time being.

If we get any mild days during December, there may be a few end of year records for the next bulletin.

The final post for November was from Brian Hobby, who recorded 2 **December Moth**, 2 **Light-brown Apple Moth**, 1 **Red-green Carpet**, 2 **Mottled Umber**, 2 **Scarce Umber** and a single **Blastobasis adustella**, which is about a month late, on 22/23.

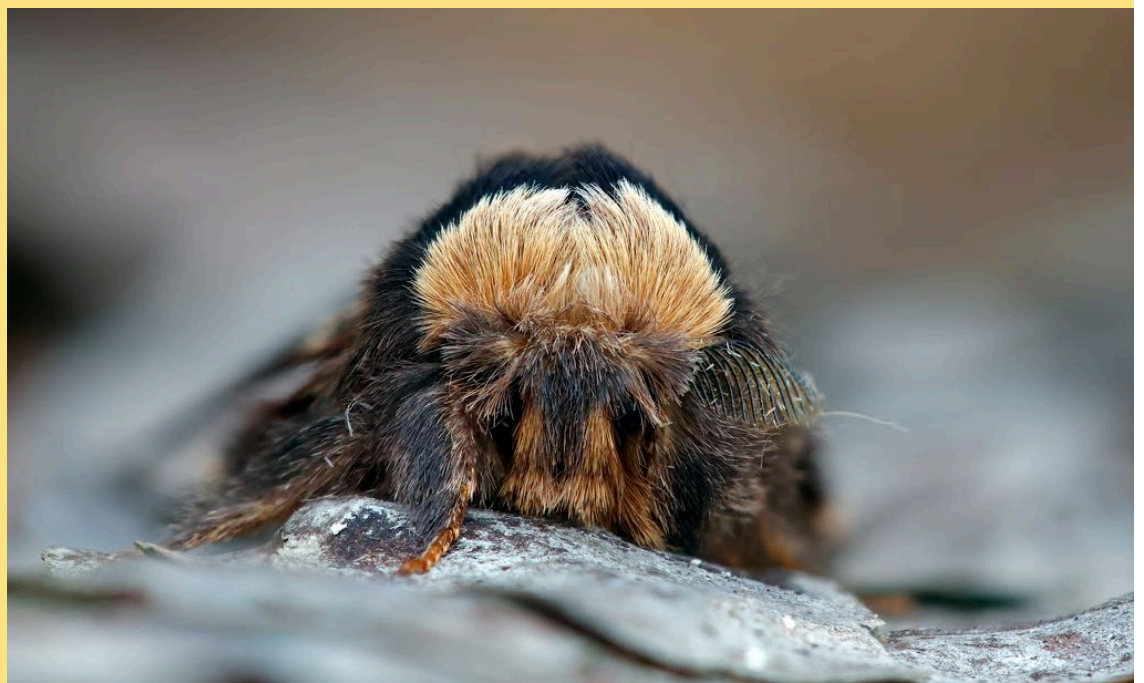
NEWS ITEMS- The **Gelechiid Recording Scheme** covers 167 species in the family Gelechiidae (comprising 54 genera) recorded in the British Isles. It also, following common practice, includes species recorded from the Channel Islands. **Website address is www.gelechiid.co.uk**

Derbyshire Moth recording meeting with DaNES and DWT - Myself and Steve Thorpe recently met with representatives of DaNES and DWT to look at finding a replacement for our county recorder. We discussed the route that records should be sent to a central store, so that DaNES and DWT can get hold of those records, as well as providing open access for anyone else. We decided that this should be the **iRecord** system, so we are looking at developing a workflow to ensure that all our Derbyshire recorders can submit their records too **iRecord** quickly. We will then look to build a **Record Verification Team** with me and Steve at the helm. For now, please ensure that your records are kept safe, and we will be in touch once we have ironed out the last details of our plan. Many thanks for your patience.

I'll close off this months bulletin with Martin Roome's stunning photograph of the November Moth of the Month.

Till the next time.

Tony Davison.



December Moth - Martin Roome